



RUGGED BATTERY-POWERED WIRELESS MOBILE LTE ROUTER FOR ON-THE-GO CONNECTIVITY



The ByteSpeed W3 Portal's ruggedized case deploys virtually anywhere to create a durable hot spot to get your users connected to the web. With a set of high-performance antennas built into the lid, it deploys quickly and stands up to rough outdoor conditions without the loss of performance.

Order with either the Cradlepoint IBR600C (typically supports 5 to 10 user connections depending on usage) or IBR900-1200M (typically supports 15 to 25 user connections depending on usage) and you'll have a portable, battery-powered system for on-the-go connectivity.

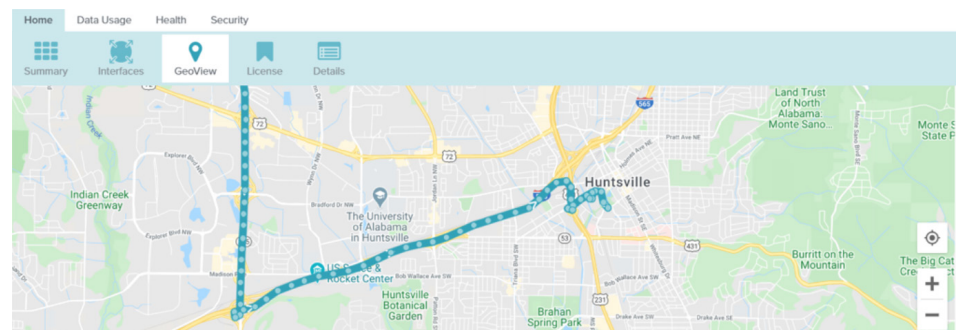
KEY FEATURES

- Compatible with Verizon, AT&T, Sprint, T-Mobile LTE & CBRS bands
- Portable antenna system for emergency and portable communication
- Omni-directional LTE, Wi-Fi, and GPS (5 total antennas)
- LTE LAA, public safety, 5G ready, and CBRS compliant
- 2x2 MIMO LTE frequencies from 600 MHz to 3.8 GHz
- 2x2 MIMO Wi-Fi w/2.4 & 5 GHz frequencies
- Rugged waterproof and dustproof IP67-rated carrying case
- -40 to 85°C operating temp. range
- Included 23,000mAh battery that offers 10 to 14 hours of battery life in the field.

NetCloud Service - Complete Cloud Management

NetCloud Service, delivered through purpose-built LTE and 5G wireless edge routers, is a complete software platform that enables your transition to a Wireless WAN. It's delivered in an all-in-one subscription that aligns with your needs.

NetCloud GPS View of Router Location



Would you like to a video demonstration of this solution?



VIEW WEBINAR RECORDING HERE:
www.youtube.com/watch?v=RuHoAgs6zZM